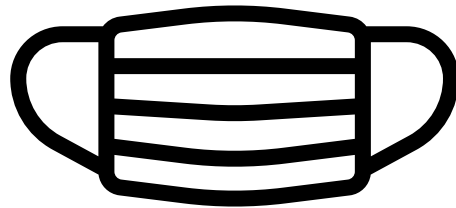


# STOP

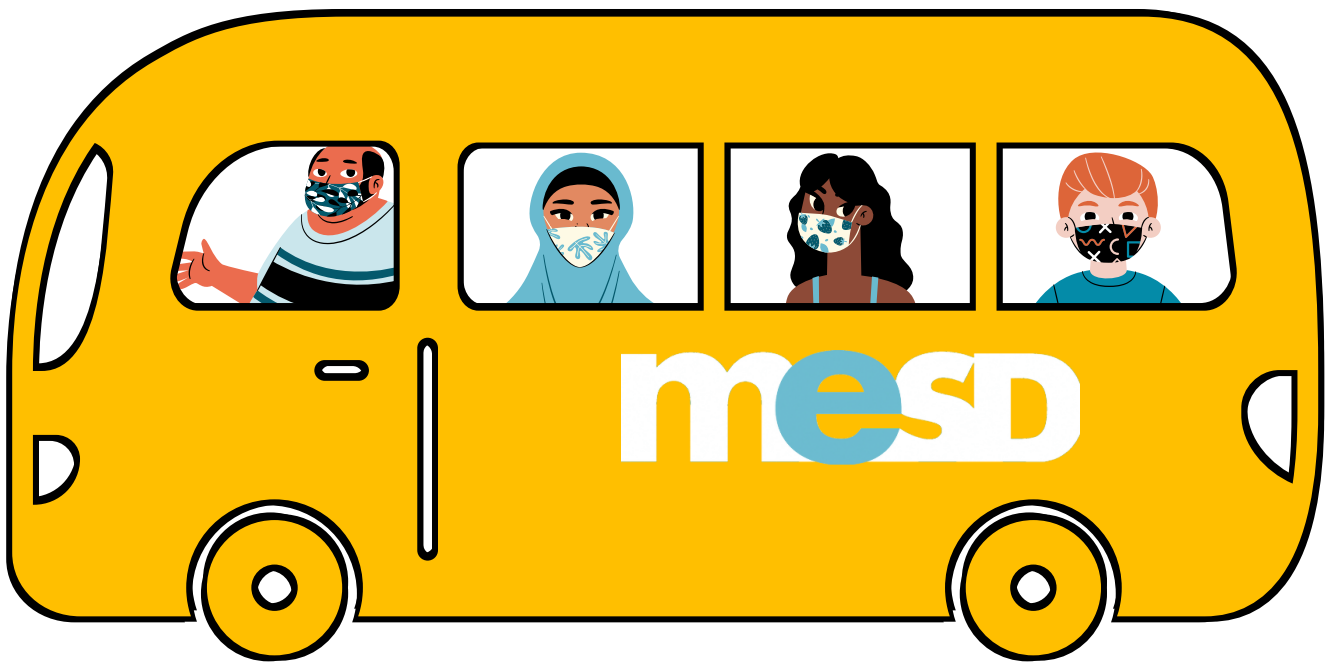


**FACE  
COVERINGS  
REQUIRED**

beyond this  
point

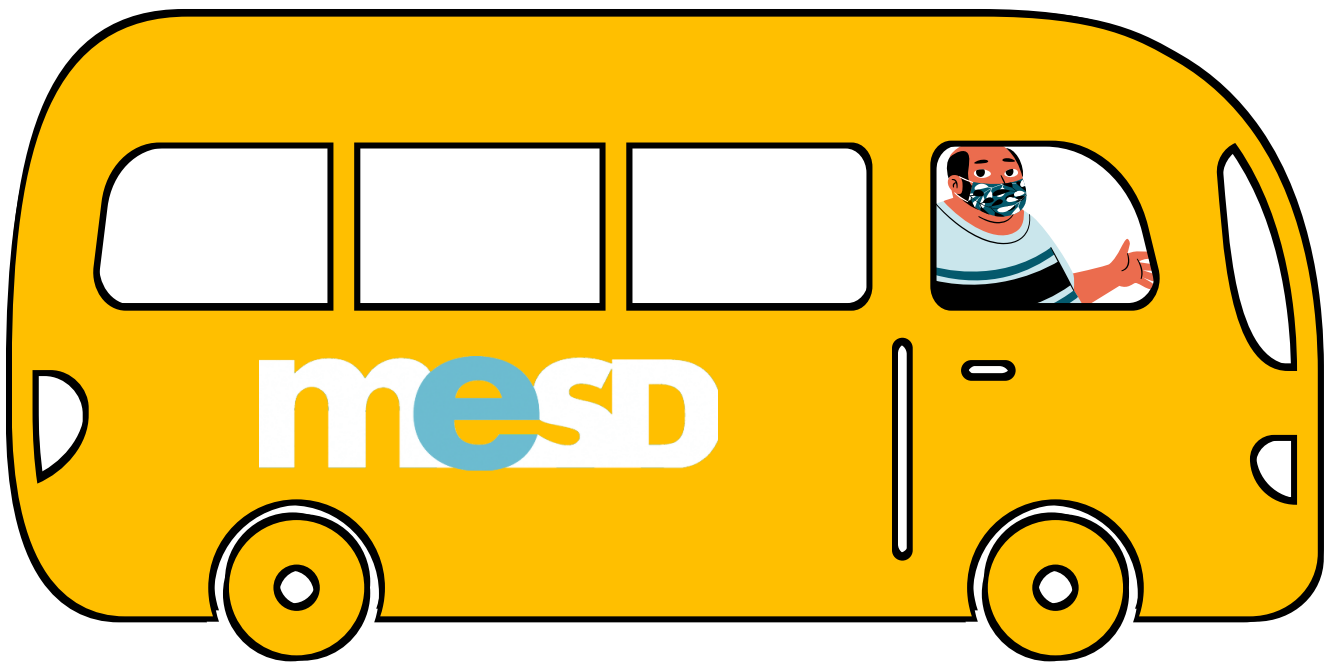
**mesd**

# BUS



# LOADING ZONE

# BUS



# UNLOADING ZONE



**LEAVE THIS SEAT  
EMPTY**



LEAVE THIS SEAT  
EMPTY

# SINGLE OCCUPANCY SPACE

Please wait at a safe  
distance until the  
current occupant  
is finished  
before entering

**mesd**



# ESSENTIAL VISITORS ONLY

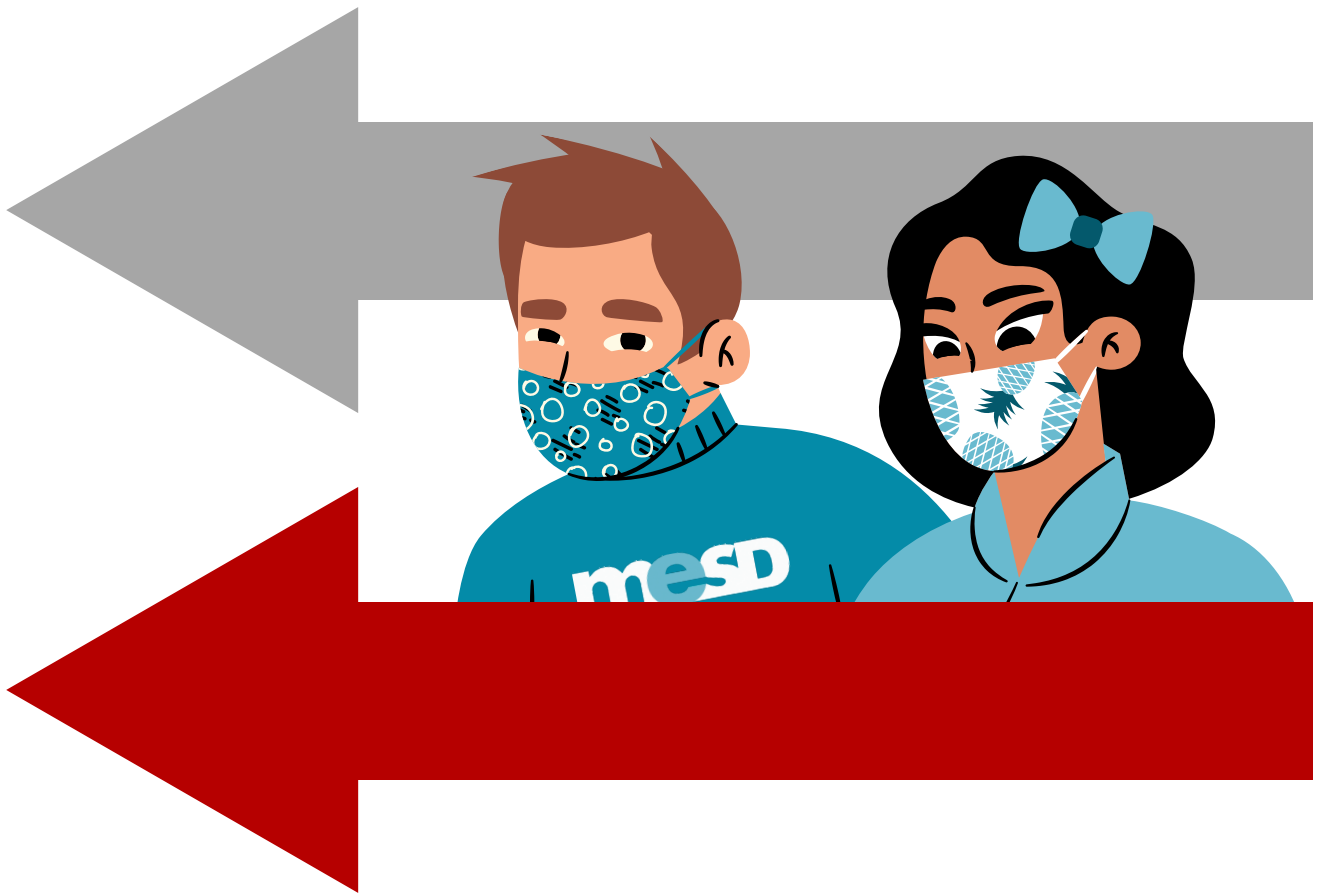


If you are unsure,  
please contact  
the office

**mesd**

(503) 255-1841

# ONE



# WAY

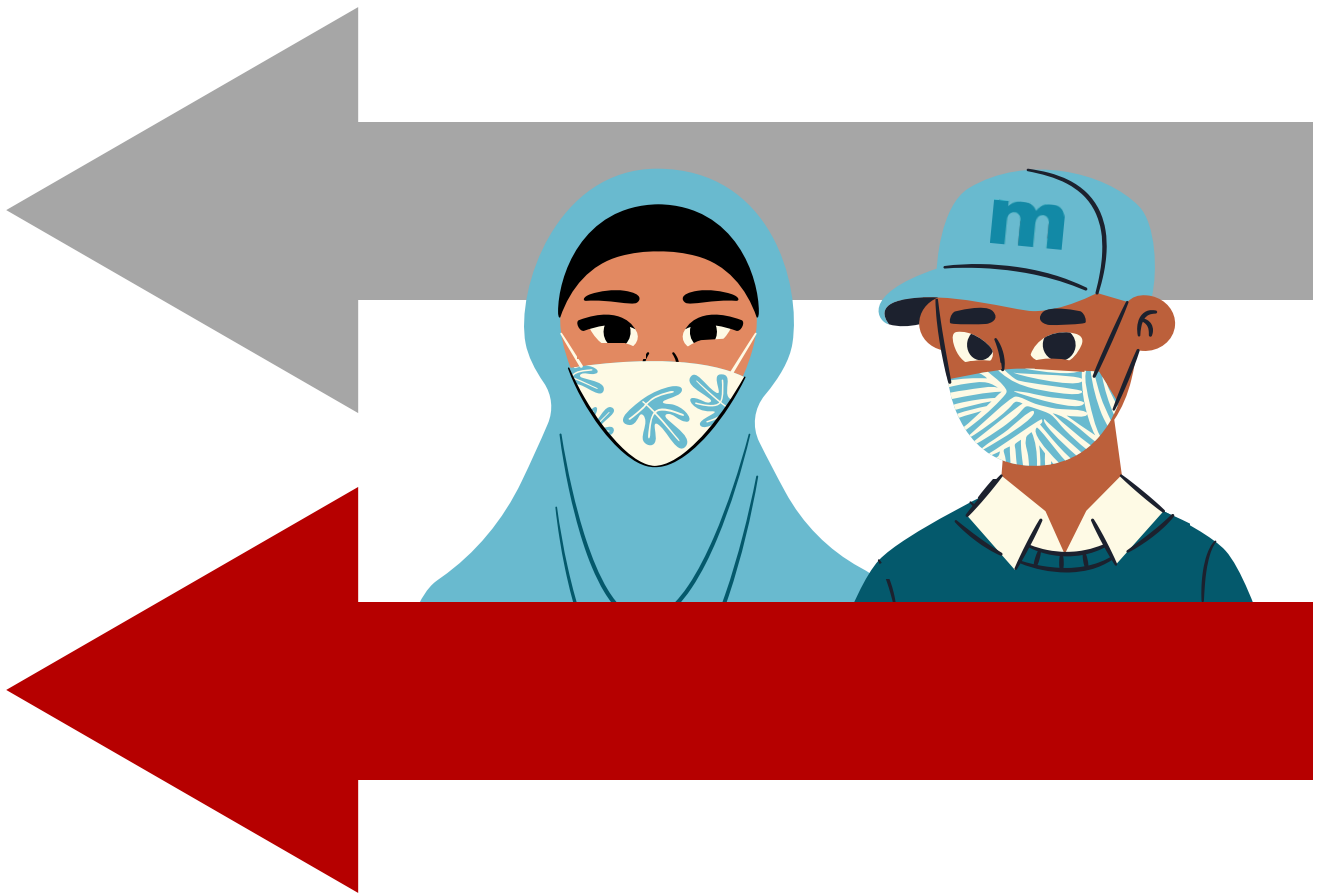


# ONE



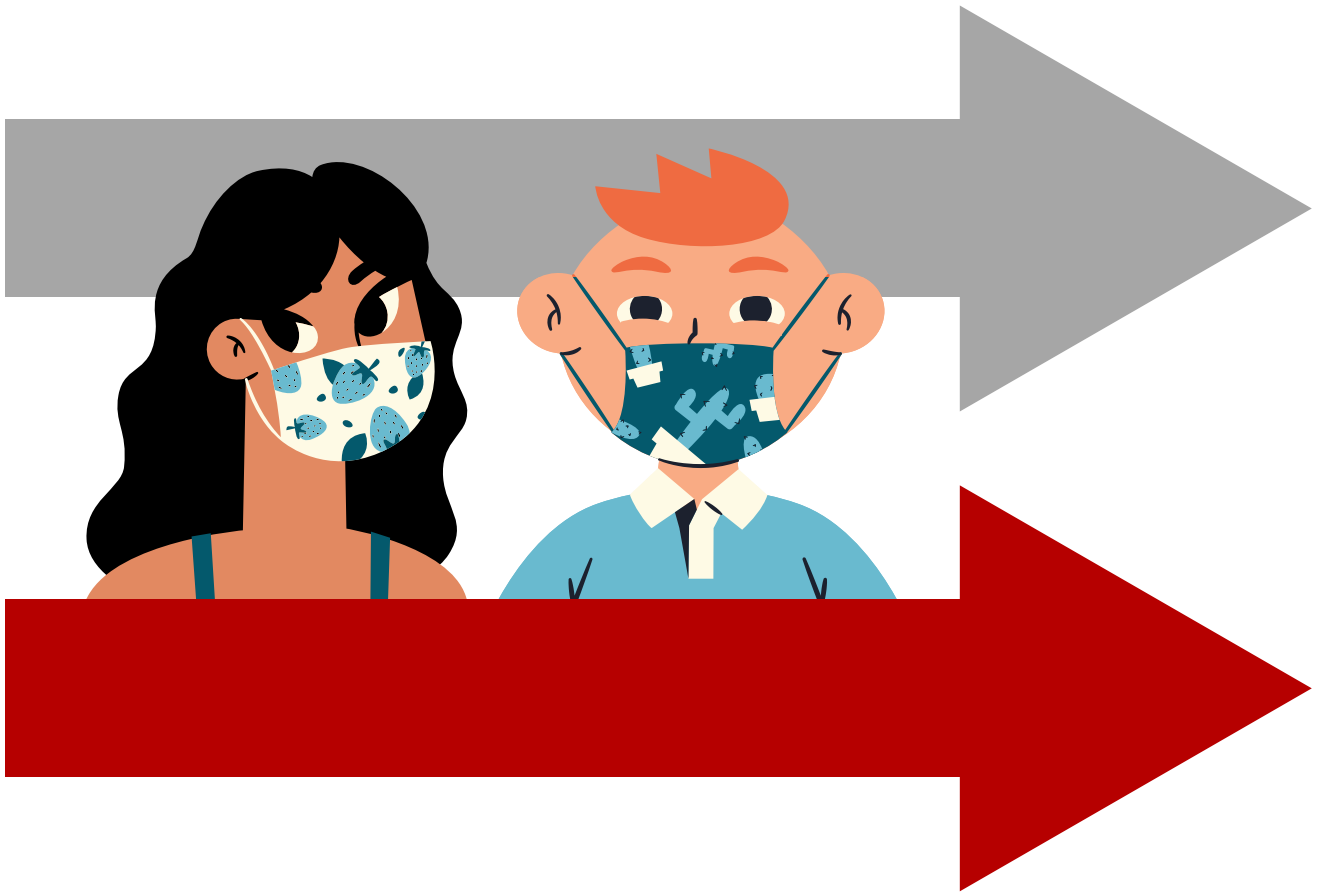
# WAY

# ONE



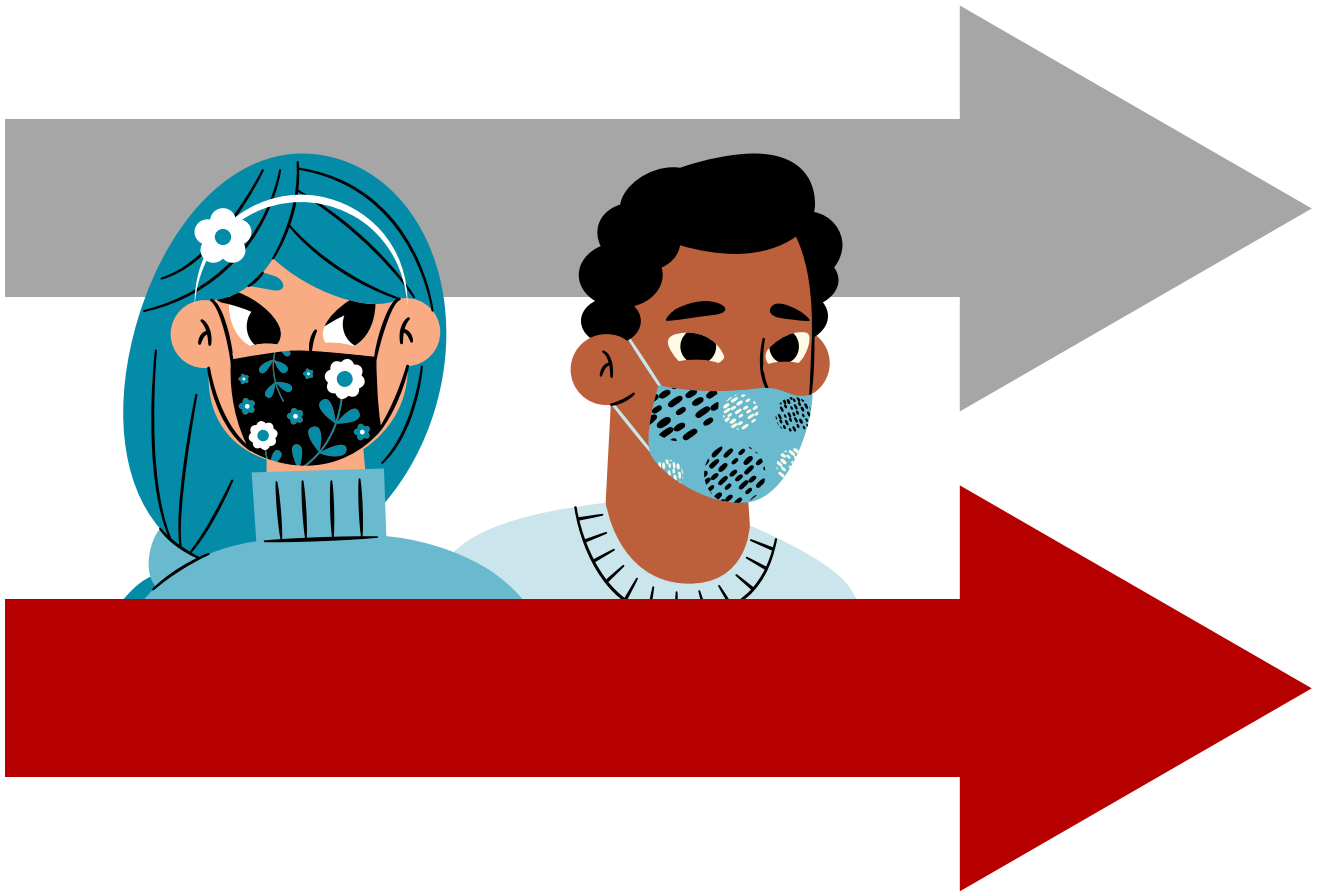
# WAY

# ONE



# WAY

# ONE



# WAY

# SINGLE OCCUPANCY ELEVATOR



Please wait at a  
safe distance until  
the elevator is  
empty before  
boarding

# STAFF

## ALTERNATIVE LUNCH SPACE

Please keep at least  
6 feet away from others

Please use  
a face covering  
when not eating



# SINGLE OCCUPANCY WAITING ROOM



Only one student  
occupant at a time;

student may be  
attended to by  
a staff member

# REMEMBER TO WEAR YOUR MASK



Keep your mouth  
*and* nose covered  
at all times

**mesd**



# REMEMBER TO WEAR YOUR MASK



Keep your mouth  
*and* nose covered  
at all times

# REMEMBER TO WEAR YOUR MASK

Keep your  
mouth *and* nose  
covered at all  
times

mesd



# REMEMBER TO WEAR YOUR MASK

Keep your  
mouth *and* nose  
covered at all  
times



**UP  
ONLY**



**mesd**

# UP ONLY



**mesd**

**PLEASE USE ANOTHER  
STAIRCASE TO GO DOWN**

mesd



**DOWN  
ONLY**

# DOWN ONLY

**mesd**



## PLEASE USE ANOTHER STAIRCASE TO GO UP

# LEAVE SPACE

Only one person  
at a time  
may use the sinks



mesd



# STALL CLOSED



**mesd**

# ENTER ONLY

Welcome!

When you leave,  
please find an  
*exit only* door

mesd



# ENTER ONLY

Please find  
another exit



# EXIT ONLY

See you next time!



mesd

# EXIT ONLY

Please find  
another entrance



# TECHNOLOGY SERVICES CONTACTLESS PICK-UP AND RETURNS

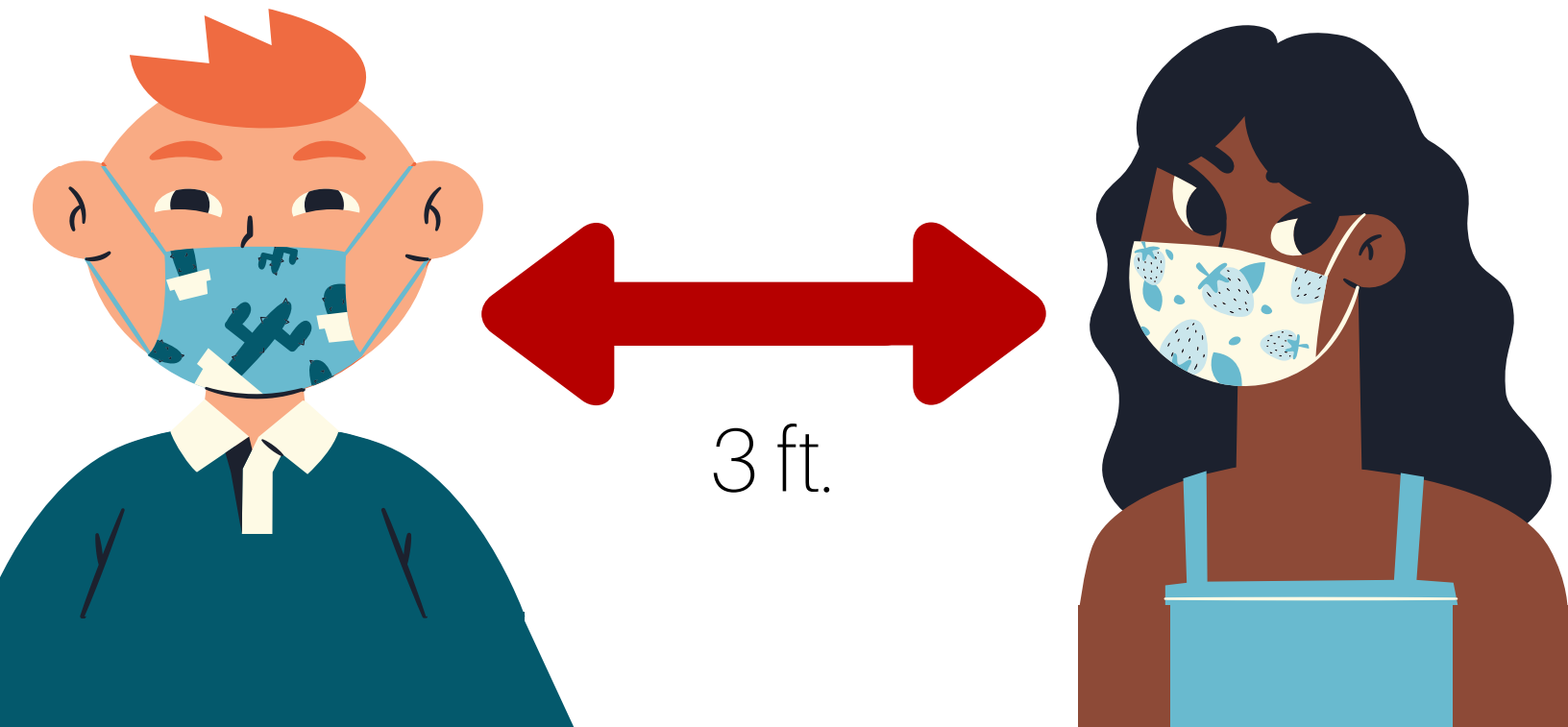


Confined space;  
please wait until  
current occupant is  
finished before  
entering

**mesd**

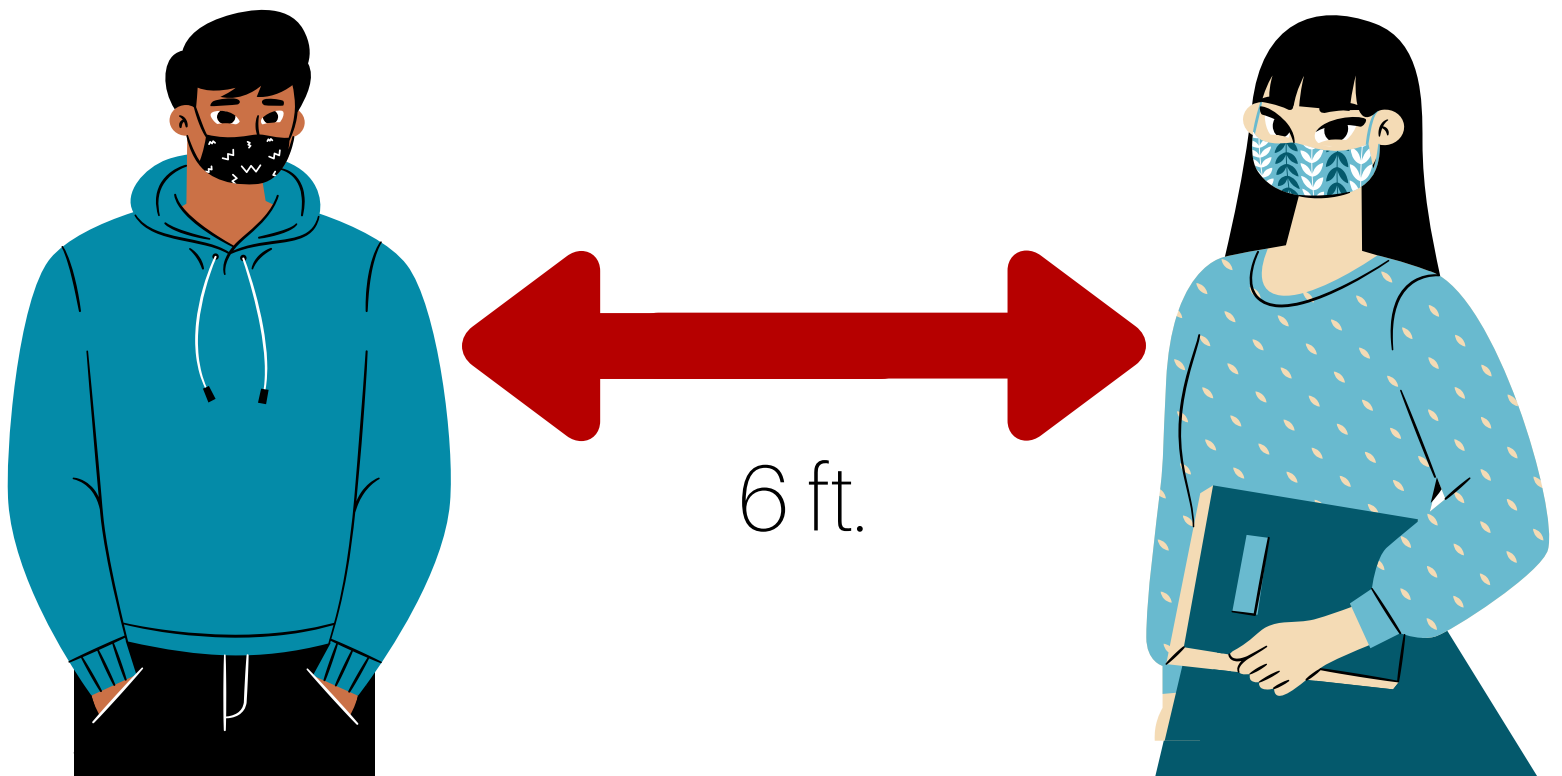
# PLEASE KEEP 3 FEET OF SOCIAL DISTANCE

Leave a comfortable space  
between yourself and others



# PLEASE KEEP 6 FEET OF SOCIAL DISTANCE

Leave a comfortable space  
between yourself and others





# MASKS REQUIRED

In accordance with Multnomah  
County Health recommendation,  
all persons must  
wear masks in the  
Ainsworth building  
regardless of  
vaccination  
status.



**mesd**